

## Academic positions (all levels) in marine modelling, University of Strathclyde, Glasgow, UK

The Marine Modelling group at University of Strathclyde invites applications at all academic levels (lecturer/reader/professor) to the Strathclyde Global Talent Programme in the area of “modelling of marine ecosystems.” Research specialities of interest include, but are not limited to,

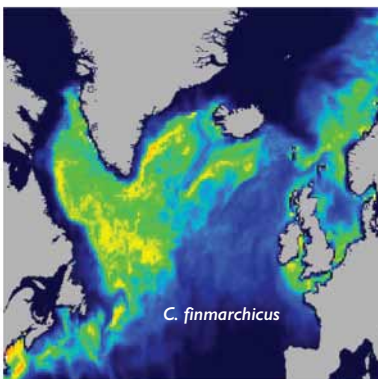
- Ecosystem dynamics
- Fisheries stock assessment
  - Fisheries oceanography
  - Population dynamics from plankton to top predators
  - Trait-based and diversity-resolving approaches
  - The changing Arctic; European marine resources; challenges facing the global South
- End-to-end linkages
- Regional hydrodynamic modelling\*
  - Earth-system modelling and climate downscaling\*
  - Socioeconomic dimensions, including valuation of ecosystem services\*
  - Environmental impacts of fishing



\* You don't necessarily have to be an ecosystem modeller to be part of "modelling of marine ecosystems."

For lecturer/senior lecturer-level\*\* applicants, the Chancellor's Fellowship scheme provides substantially reduced teaching in the first five years and a path to rapid promotion. Similar incentives are available to readers/professors.

\*\* Assistant professor/ pre-tenure in the US system.



### About us

The Marine Modelling group in the Department of Mathematics and Statistics is the largest cluster of marine researchers in the Faculty of Science. We are four academic staff (Prof Mike Heath, Dr Neil Banas, Dr Dougie Speirs, and Dr Juan Bonachela) and 20–25 other researchers, postdocs, and PhD students from around the globe. Our focus is on development of mathematical models and statistical analyses to reveal how ecosystems respond to climate and human activity and assist policymakers. Current projects range in scale from local fisheries to global biogeochemistry, and from viruses to top predators.

We have strong ties to seagoing groups and experimentalists across the MASTS (Marine Alliance for Science and Technology Scotland) partnership, as well as US, Norwegian, and many other international partners. Our campus is in the Glasgow city centre, within a few-hour journey of research centres across Europe and 45,000 nesting pairs of puffins.

We are happy to discuss draft applications prior to submission to the university-wide call, which closes **24 Sept 2017**.

Prof Mike Heath (<http://www.strath.ac.uk/staff/heathmichaelprof/>)  
Dr Neil Banas (<http://neilbanas.com/projects/>)  
Dr Dougie Speirs (<http://www.strath.ac.uk/staff/speirsdouglasdr/>)  
Dr Juan Bonachela (<http://www.strath.ac.uk/staff/bonachelajuandr/>)

For more information on the Global Talent Programme, Chancellor's Fellowships, and how to apply, please see <http://tinyurl.com/strathmodelling2017>.